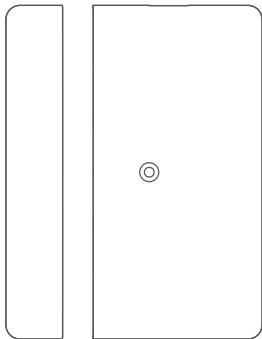


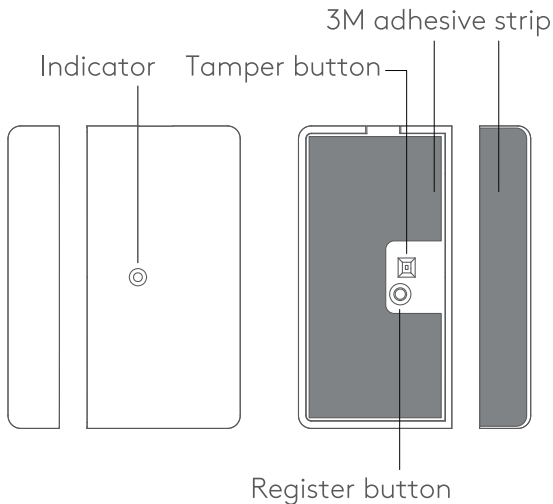


— Door Magnetic Sensor —

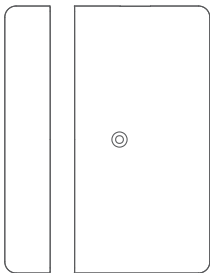


Quick Start Guide

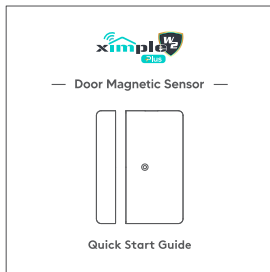
Appearance



Packaging List



Door Magnetic
Sensor x1



QSG x1

Download App :

- 1 Open your smartphone camera.
- 2 Scan the QR code below.
- 3 Tap the link that appears.
- 4 Download and install the Ximple W2 Plus app.

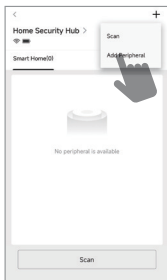


Ximple W2 Plus



Add Door Magnetic Sensor

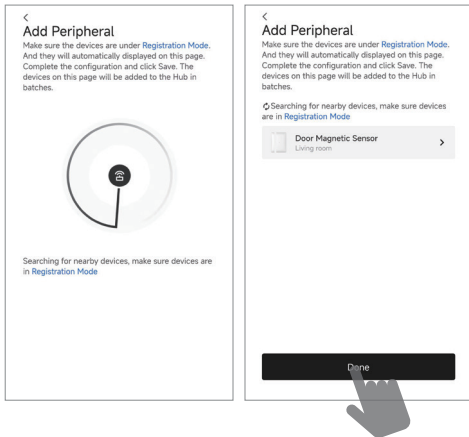
- 1 Click Home Security Hub , then click "+" and select "Add peripheral" .



- 2 Pull out the insulation strip to power up the device , the green indicator will flash and the device will show in the App.
**Note: If the device does not show in the App and green indicator is off , please press and hold the register button for 5s to try again.*

Add Door Magnetic Sensor

- 3 Assign a room and click the "Done" to finish adding.



Testing Instruction

Signal Strength Test

Click "⚙️" → "Signal Strength Test" → "▶️" to check signal strength.

It is not advisable
to install here.



It is suitable
to install here.

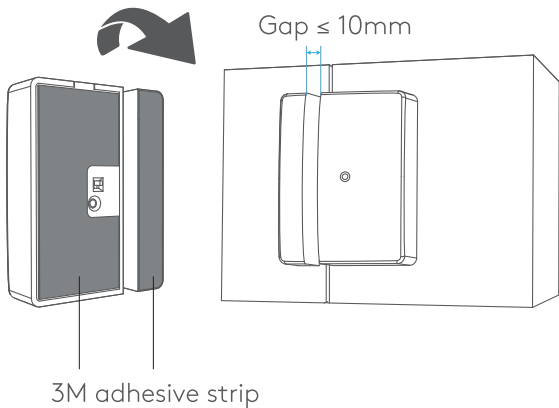


It is suitable
to install here.



Installation Instruction

Mount on the door by 3M adhesive strip.



Device specifications

Detection Performance	
Detection Method	Opening Contact
Detection Gap	>17mm
Feature	
Advanced Features	Digital Processing,Signal Strength detection,Find Me
Tamper Protection	Rear
Wireless Transmission	
Transmission Frequency	921MHz
Transmission Range(Open Space)	1000m
Advanced Tech	AES-128 Encryption,FHSS,TDMA
Electrical Characteristics	
Standard Battery Life	AA Battery× 1,Up to 2years (standby mode)
General	
Operation Temperature	-10°C to 55°C (14 °F to 131 °F)
Dimension(WxHxD)	82mm x 42mm x 16mm (Body) 82mm x 11mm x 18mm(Magnet)
Weight	55.6g
Application Scenario	Indoor
Installation Method	Adhesive

Powered by ***bluguard***[®]

 www.bluguard.com.my